



33 Cranfield Road, Liverpool, Merseyside L23 9TY

Offers In Excess Of £265,000

Would you like to live within a stone's throw of Crosby Village?

This 3 BED SEMI is an ideal family home, and given its locality to popular primary and secondary schools, will be an excellent buy.

Following some refurbishment, this property would be ideal for a first time buyer or young family.

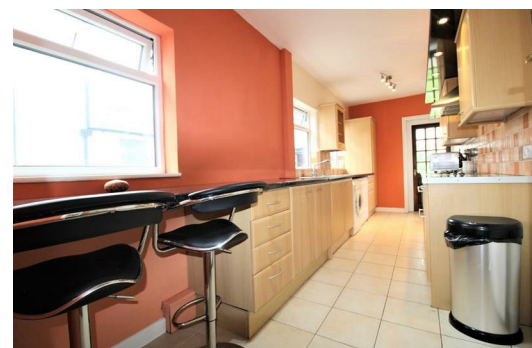
Benefiting from off road parking, garage and gardens, this is a property with significant potential.

On the ground floor there is an entrance hallway, 2 reception rooms and kitchen.

To the first floor are 3 bedrooms, a Family Bathroom and separate WC.

Externally there is a driveway and gardens.

Call now to book your viewing.



Porch

Hall

Radiator, carpet

Lounge

11'1" x 14'9" (3.4 x 4.5)

UPVC double glazed bow bay window, feature gas fire with surround, radiator

Reception 2

10'9" x 12'9" (3.3 x 3.9)

UPVC double glazed window, gas fire with surround, radiator, UPVC patio doors to decked area of rear garden, wooden flooring

Kitchen

19'8" x 6'10" (6 x 2.1)

Rang of wall and base units, stainless steel sink with mixer tap, gas oven, electric hob with extractor fan, integrated fridge freezer, space for washing machine, UPVC double glazed window x 3, part tiled walls, tiled floor

Master Bedroom

11'5" x 14'1" (3.5 x 4.3)

UPVC double glazed bow bay window, radiator

Bedroom two

13'5" x 11'9" (4.1 x 3.6)

UPVC double glazed window, fitted wardrobes, radiator

Bedroom Three

9'6" x 6'10" (2.9 x 2.1)

UPVC double glazed window, radiator

Family Bathroom

7'10" x 7'2" (2.4 x 2.2)

Corner bath, pedestal sink, radiator, tiled walls, tiled floor, UPVC double glazed window,

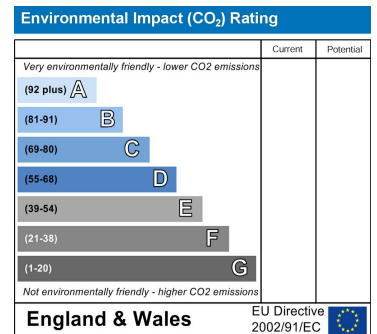
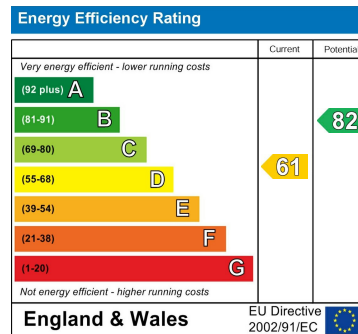
W/C

3'11" x 2'3" (1.2 x 0.7)

Low level WC, UPVC double glazed window

Outside

To the front there is a driveway. To the rear there is a decked area, lawn and established plants.



Whilst every attempt has been made to ensure the accuracy of the Floorplan contained here, measurements of areas, window, doors and any other items are approximate and no responsibility is taken for any error, omission or mis-statement. This plan is for illustrative purposes only and should be used as such by any prospective purchaser. The services, systems and appliances shown here are not intended to be guaranteed. We do not warrant, or otherwise, our floor plans. Made with Hoxpax 6/2021

