



Marine House, 105 Mariners Wharf, Liverpool, Merseyside L3 4DH

£1,200 PCM

Berkeley Shaw are pleased to offer this two bedroom ground floor apartment set within an exclusive development comprising just six apartments and two penthouses, the tranquil surroundings of this beautiful apartment are something very rarely found in the normal hustle and bustle of a major City Center. The stylish and historic Coberg Dock setting with its neighboring sights, buildings and sounds provide an intoxicating maritime backdrop to the elegant and striking Marine House.

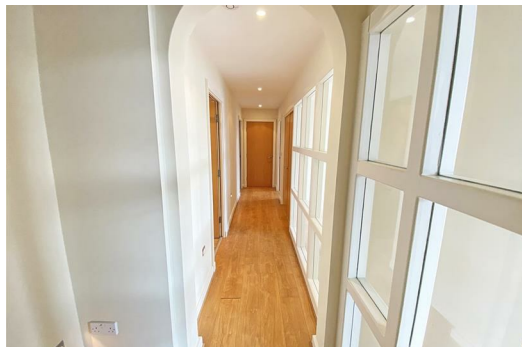
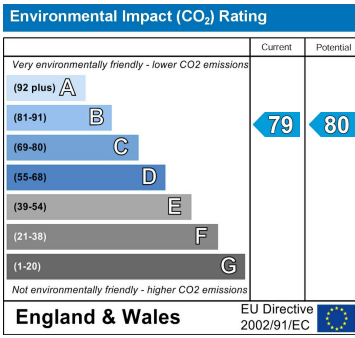
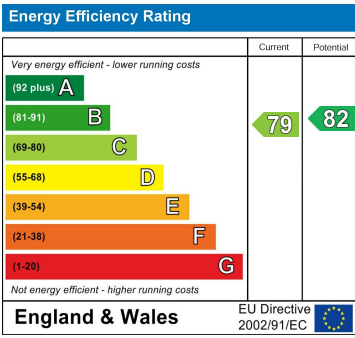
Just minutes from City Centre, with its plethora of restaurants, shops, museums and attractions, this is one of the most attractive locations in the City.

Briefly comprising living/dining room, separate fitted kitchen with views towards the Three Graces, suite comprising bedroom, dressing room and bathroom, two further bedrooms and a shower room and a gross internal area of approximately 1100 sqft. The property offers unrivaled outdoor space, having exclusive right of access to a large cobbled terrace with decked area measuring approximately 300 sqft.

Benefits include; Video entry system, gated parking, integrated appliances, floor to ceiling windows, cycle store, gas central heating & double glazing.

A stunning property for the discerning professional.





Berkeley Shaw Estate Agents Limited.
Company No. 0784754

Berkeley Shaw Real Estate Limited.
Company No. 05206927

