



Crosby Gardens, 16 Crosby Road North, Liverpool, Merseyside L22 0AD

£650 PCM

CROSBY GARDENS is set in the heart of one of Liverpool's most affluent suburbs. We have a mixture of STUDIO, ONE BED and TWO BED Furnished/ Unfurnished Apartments. The Development is within minutes of Crosby Beach, these beautifully-appointed apartments are designed for professionals working in the city, but looking for a relaxed coastal lifestyle. Crosby Beach is home to Sir Antony Gormley's iconic art installation, 'Another Place'.

Crosby was recently named by 'The Sunday Times' as one of the top 5 places to live in the North West and is popular with sports stars and celebrities. Crosby Gardens complete with concierge, integrated appliances, and optional on-site parking.

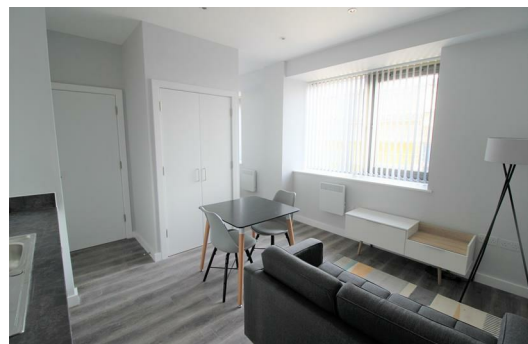
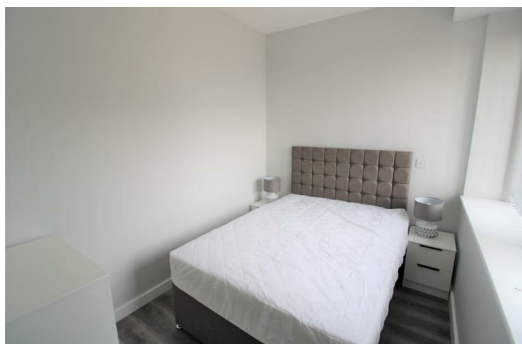
We offer TO LET a Furnished Studio Apartment

PLEASE CALL TO BOOK APPOINTMENT 01519246000

Council Tax band: A

Deposit: £650

Rental Duration: minimum 6 months



Lounge/ Kitchen

Double glazed window, electric wall heaters, wooden flooring, kitchen comprises of a range of fitted base and wall units, integrated Electric Oven and Hob, under counter integrated fridge with icebox, Integrated Washing Machine, built in Storage Cupboard with hanging space

Bedroom

Open to lounge, double glazed window, electric heater

Bathroom

Fully tiled, walk in electric shower, low level w.c. sink unit.

Energy Efficiency Rating		Current	Potential
<i>Very energy efficient - lower running costs</i>			
(92 plus) A			
(81-91) B			
(69-80) C			
(55-68) D		62	62
(39-54) E			
(21-38) F			
(1-20) G			
<i>Not energy efficient - higher running costs</i>			
England & Wales		EU Directive 2002/91/EC	

Environmental Impact (CO ₂) Rating		Current	Potential
<i>Very environmentally friendly - lower CO₂ emissions</i>			
(92 plus) A			
(81-91) B			
(69-80) C			
(55-68) D			
(39-54) E			
(21-38) F			
(1-20) G			
<i>Not environmentally friendly - higher CO₂ emissions</i>			
England & Wales		EU Directive 2002/91/EC	



Berkeley Shaw Estate Agents Limited.
Company No. 0784754

Berkeley Shaw Real Estate Limited.
Company No. 05206927

