



## Crosby Gardens, 16 Crosby Road North, Liverpool, Merseyside L22 0AD

£695 PCM

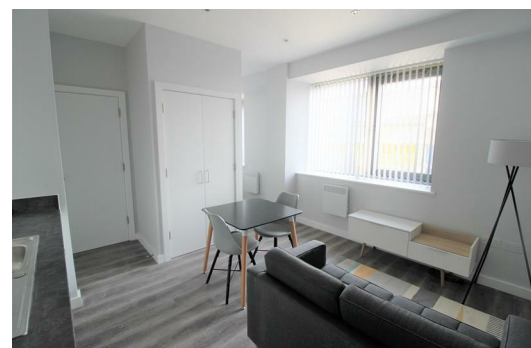
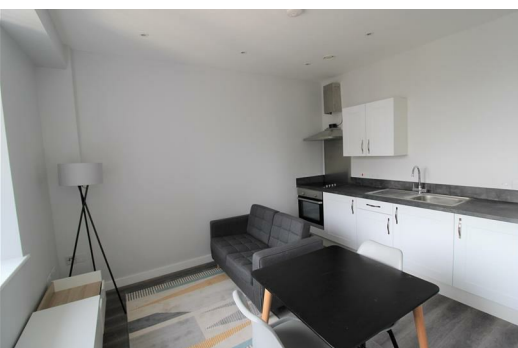
Crosby Gardens is a stunning residential development set in the heart of one of Liverpool's most affluent suburbs. We have a STUDIO Furnished apartment. The Development is within minutes of Crosby Beach, these beautifully-appointed apartments are designed for professionals working in the city, but looking for a relaxed coastal lifestyle. Crosby Beach is home to Sir Antony Gormley's iconic art installation, 'Another Place'.

Crosby was recently named by 'The Sunday Times' as one of the top 5 places to live in the North West and is popular with sports stars and celebrities. Crosby Gardens complete with concierge, integrated appliances, and optional on-site car parking \* Subject to Availability and Charges.

Council Tax Band:- A

Deposit :- £695

Lease Length:- Minimum 12 months



## Lounge/ Kitchen

Double glazed window, electric wall heaters, wooden flooring, kitchen comprises of a range of fitted base and wall units, integrated Electric Oven and Hob, under counter integrated fridge with icebox, Integrated Washing Machine, built in Storage Cupboard with hanging space

## Bedroom

Open to lounge, double glazed window, electric heater

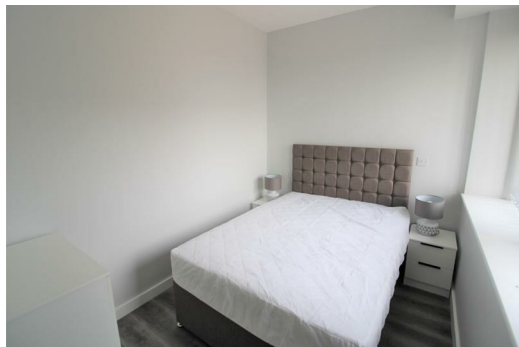
## Bathroom

Fully tiled, walk in electric shower, low level w.c. sink unit.

| Energy Efficiency Rating                    |  | Current                 | Potential |
|---|--|-------------------------|-----------|
| Very energy efficient - lower running costs |  |                         |           |
| (92 plus) A                                 |  |                         |           |
| (81-91) B                                   |  |                         |           |
| (69-80) C                                   |  |                         |           |
| (55-68) D                                   |  | 61                      | 61        |
| (39-54) E                                   |  |                         |           |
| (21-38) F                                   |  |                         |           |
| (1-20) G                                    |  |                         |           |
| Not energy efficient - higher running costs |  |                         |           |
| England & Wales                             |  | EU Directive 2002/91/EC |           |

| Environmental Impact (CO <sub>2</sub> ) Rating                  |  | Current                 | Potential |
|---|--|-------------------------|-----------|
| Very environmentally friendly - lower CO <sub>2</sub> emissions |  |                         |           |
| (92 plus) A   |  |                         |           |
| (81-91) B   |  |                         |           |
| (69-80) C   |  |                         |           |
| (55-68) D   |  |                         |           |
| (39-54) E   |  |                         |           |
| (21-38) F   |  |                         |           |
| (1-20) G  |  |                         |           |
| Not environmentally friendly - higher CO <sub>2</sub> emissions |  |                         |           |
| England & Wales   |  | EU Directive 2002/91/EC |           |



Berkeley Shaw Estate Agents Limited.  
Company No. 0784754

Berkeley Shaw Real Estate Limited.  
Company No. 05206927

