



138a Northumberland Street, Liverpool, Merseyside L8 8AZ

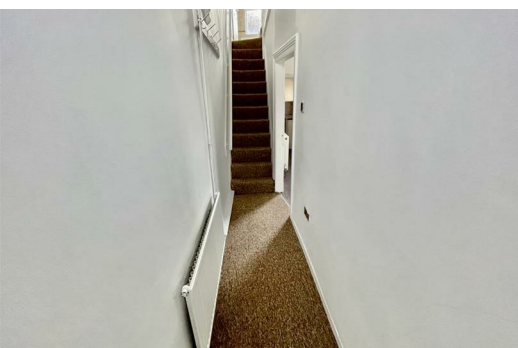
£650 PCM

2 BEDROOM UNFURNISHED HOUSE located in the popular Toxteth area of Liverpool. This terrace house is available on a unfurnished basis and briefly comprising of; entrance hallway, open plan lounge/dining room, bay widow, fitted kitchen, Bathroom and rear back yard. Upstairs there is a further two double bedrooms. The property is in an ideal location being only 5 minutes form the City Centre and the popular Chinatown district.

Council Tax band: A

Deposit: £625

Rental Duration: minimum 6 months



Hallway

Large spacious Hallway

Open Plan Living/Dining Room

Large open plan Living/Dining Room, with bay Window

Kitchen

Fully Fitted Kitchen

Rear Yard

Good size Rear Yard

Master Bedroom

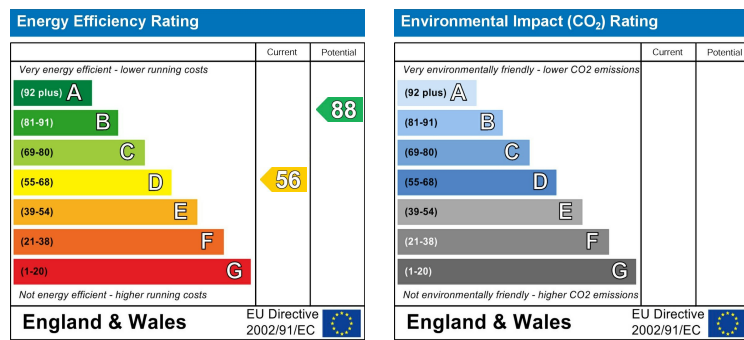
Large Master Bedroom

Second Bedroom

A very spacious second bedroom.

Bathroom

Good size Bathroom.



Berkeley Shaw Estate Agents Limited.
Company No. 0784754

Berkeley Shaw Real Estate Limited.
Company No. 05206927

