



59 Court Road, Southport, Merseyside PR9 9EU

£1,575 PCM

Karen Parks at Berkeley Shaw is delighted to offer for long term let this 3/4 bedroom DETACHED home. The accommodation comprises: front exterior, open plan Kitchen diner, utility, lounge, downstairs shower room, additional reception / bedroom 4 to the ground floor. To the first floor three bedrooms, and family bathroom. Outside a drive with parking for cars and a good sized low maintenance rear garden. Available NOW

Call to book a viewing now on 0151 924 6000

Deposit :£1575

Council Tax: Band TBC

Lease Length: minimum 12 months



Open Plan Kitchen Lounge

Double glazed Door and window, wooden floor, kitchen comprises of fitted base and wall units, sink with mixer tap, integrated oven and hob, extractor, plumbing for dishwasher, space for fridge freezer, underfloor heating

Reception 2/ Bedroom 4

Double glazed doors, carpet underfloor heating

Lounge

Double glazed sliding doors, wooden floor, underfloor heating

Utilirty Room

Fitted base and wal units plumbing for washing machine and space for tumble dryer, Heating system

Shower Room

Tiled, walk in shower cubical, low level w.c. sink

Landing

Carpeted

Bedroom 1

Double glazed windows, radiator, fitted wardrobes, carpet

Bathroom

Tiled, panelled bath with shower over, double gloazed window, sink and low level w.c.

Bedroom 2

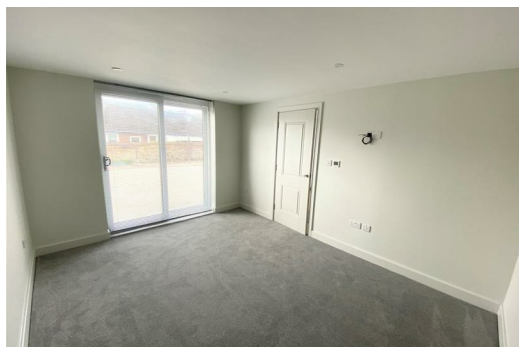
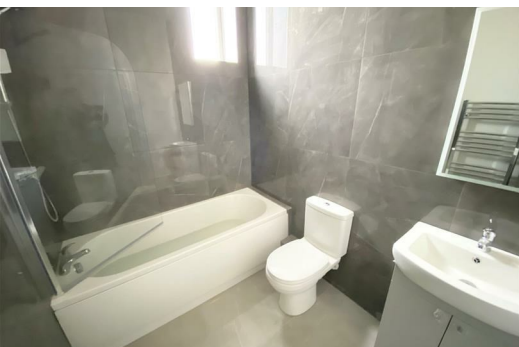
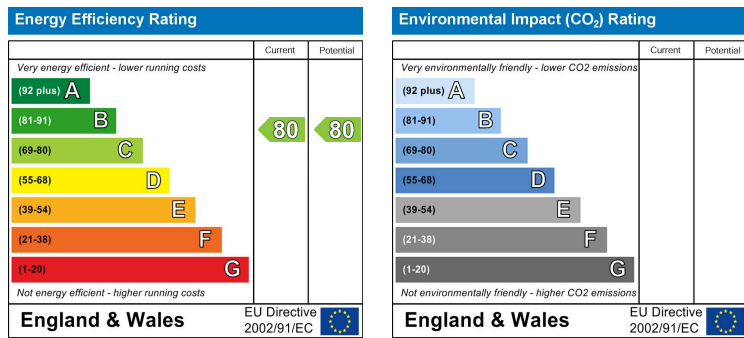
Double glazed windows, radiator, carpet fitted wardrobes

Bedroom 3

Double glazed window, radiator, carpet, fitted wardrobes

Rear Exterior

Low maintenance garden with atroturf.



Berkeley Shaw Estate Agents Limited.
Company No. 0784754

Berkeley Shaw Real Estate Limited.
Company No. 05206927

