



## 7 Lowes Green, Liverpool, L37 8EA

£270,000

NO CHAIN, Karen Parks @ Berkeley Shaw is pleased to offer for sale this extended and improved four bedroomed semi-detached family home, situated in a quiet cul-de-sac and within close proximity to local schools, transport routes and amenities. The bright spacious accommodation comprises: porch, hall, open plan kitchen/dining/lounge, family room and wc/cloakroom to the ground floor. To the first floor four bedrooms and family bathroom. Outside half garage for storage, electric car charger and gardens to the front and rear, the rear garden being west facing.



## Ground Floor

### Hall

UPVC double glazed door & side window, meter cupboard, wood effect flooring, radiator.

### Lounge/Kitchen/Dining

24'4" x 11'7" & 19'6" x 12'11" (7.44 x 3.55 & 5.96 x 3.96)

Bright west facing spacious with UPVC patio doors to rear & three UPVC windows, stairs to first floor, range of white high and low level fitted units, 1 1/2 bowl stainless steel sink unit with drainer and mixer tap, built in 'Neff Oven', built in 'Bosch' microwave oven, four ring hob with extractor over, integrated fridge/freezer, integrated dishwasher, dining and lounge area, wood effect flooring, three radiators.

### Family Room

11'6" x 9'4" (3.52 x 2.85)

UPVC patio doors to rear, wood effect flooring, radiator,

### Cloakroom/WC

White suite comprising; wash basin and low level wc in vanity unit, wall hung worcester boiler, tiled flooring, heated towel rail.

## First Floor

### Bedroom 1

11'6" x 11'0" (3.52 x 3.36)

Dual aspect UPVC double glazed windows, range of fitted wardrobes to one wall, wood effect flooring, radiator.

### Bedroom 2

11'7" x 9'4" (3.54 x 2.86)

UPVC double glazed window, built in cupboard, wood effect flooring, radiator.

### Bedroom 3

12'4" x 6'10" (3.78 x 2.10)

UPVC double glazed window, wood effect flooring, radiator.

### Bedroom 4

11'5" x 6'11" (3.50 x 2.11)

UPVC double glazed window, built in shelving, wood effect flooring, radiator.

## Family Showerroom

8'5" x 7'3" (2.59 x 2.22)

UPVC double glazed window, white suite comprising: walk in shower with fixed and hose shower heads, wash basin in vanity unit, low level wc, airing cupboard, heated towel rail, radiator.

## Outside

### Garage

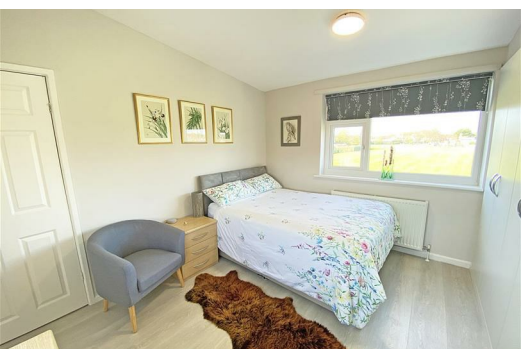
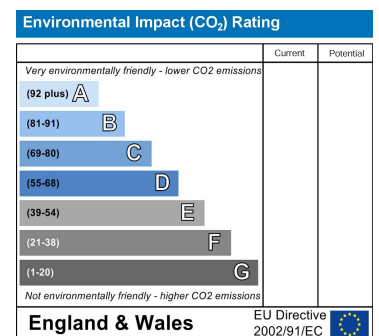
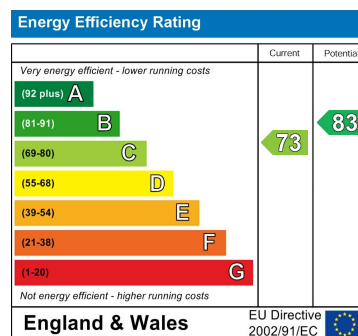
Half garage for storage.

### Front Garden

Block paved drive with parking for several cars, stoned area, borders.

### Rear Garden

South/Westerly facing, secluded, Indian stone paving, decked, borders.



Berkeley Shaw Estate Agents Limited.  
Company No. 0784754

Berkeley Shaw Real Estate Limited.  
Company No. 05206927

