



2 Neptune Place Grafton Street, Liverpool, Merseyside L8 5AH

£1,050 PCM

Berkeley Shaw are proud to introduce 2 NEPTUNE PLACE – a brand new community development based in the heart of Liverpool's coolest neighborhood; The Baltic Triangle.

A five-storey development this is a LUXURY 1 Bedroom FURNISHED Corner Apartment is available with floor-to-ceiling windows giving views of the city, the River Mersey and iconic landmarks such as the Anglican Cathedral.

The apartments also offer a spacious open-plan kitchen with integrated appliances.

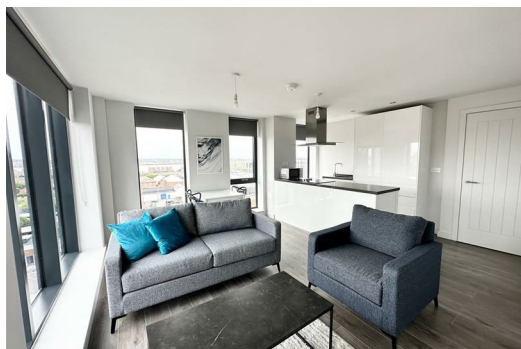
There are several facilities to offer residents a premium, practical and personable living experience. For instance, super-fast Wi-Fi (t & c apply), reception with 24-hour concierge, bike storage and CCTV security. PARKING SPACE AVAILABLE (t&c apply)

This apartment is available now

Deposit : £1050

Council Tax; B

Minimum Term: 12 Months



Hallway

Entrance Door, Laminate flooring Electric wall heater

Open Plan Lounge Kitchen

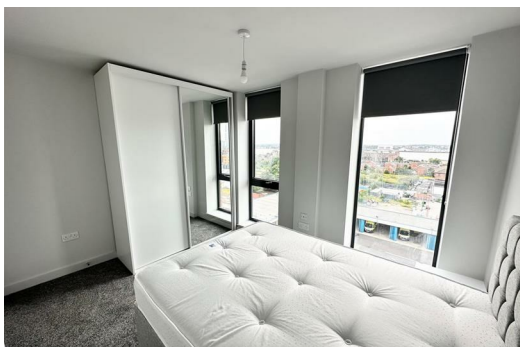
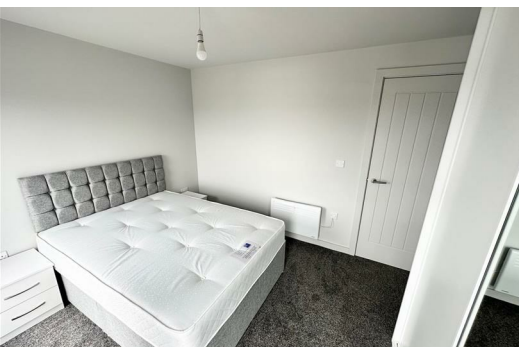
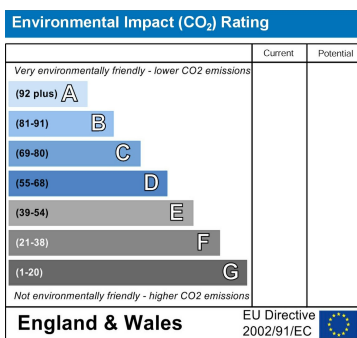
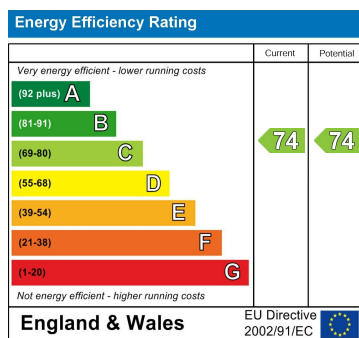
Double glazed windows on both side giving views of the river and city, laminate flooring, electric wall heaters, walk in storage cupboard housing water cylinder. Kitchen area comprises of a range of fitted base and wall units, granite worksurfaces with inset sink and mixer taps, appliances include electric oven and hob, extractor hood, washer / dryer, under counter fridge with icebox, microwave. Furnishings Include sofa, armchair, rug, coffee table, tv stand, TV dining table and 2 chairs

Bathroom

Part Tiled walls and floor, paneled bath with shower over and screen, Low level w.c. sink, mirrored wall cabinet.

Bedroom

Double glazed windows, carpet, electric wall heater, furnishing includes double bed and mattress , bedside tables, built in wardrobes



Berkeley Shaw Estate Agents Limited.
Company No. 0784754

Berkeley Shaw Real Estate Limited.
Company No. 05206927

