



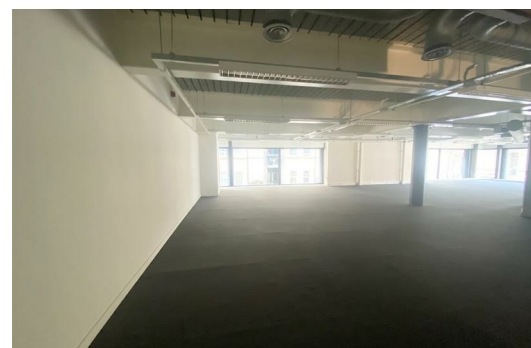
The Ternary Old Haymarket, Liverpool, L1 6ER


£1,500 PCM


The Ternary Old Haymarket is an attractive commercial First Floor Modern Open Plan Space approx. 280 sq.m (approx. 3013 sq.ft), The premises are situated at by the tunnel entrance on Dale Street, The Ternary Old Haymarket is situated close to all local amenities including Rail, Bus and Road Links the main retail and shopping district is located to the south of the building and is within easy walking distance.

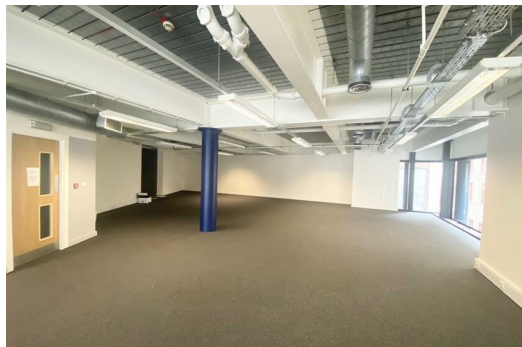
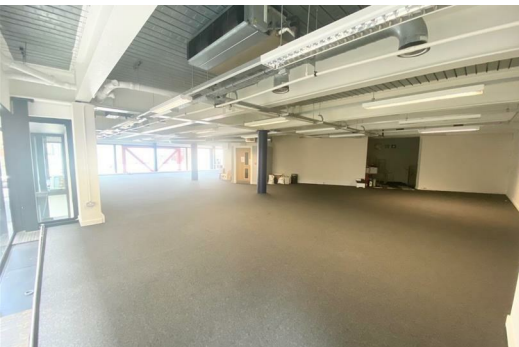
Lease length negotiable and service charge payable

Please Contact the office to arrange a viewing 01519246000



Energy Efficiency Rating		
	Current	Potential
Very energy efficient - lower running costs (92 plus) A		
(81-91) B		
(69-80) C		
(55-68) D		
(39-54) E		
(21-38) F		
(1-20) G		
Not energy efficient - higher running costs		
England & Wales	EU Directive 2002/91/EC	

Environmental Impact (CO ₂) Rating		
	Current	Potential
Very environmentally friendly - lower CO ₂ emissions (92 plus) A		
(81-91) B		
(69-80) C		
(55-68) D		
(39-54) E		
(21-38) F		
(1-20) G		
Not environmentally friendly - higher CO ₂ emissions		
England & Wales	EU Directive 2002/91/EC	



Berkeley Shaw Estate Agents Limited.
Company No. 0784754

Berkeley Shaw Real Estate Limited.
Company No. 05206927

