



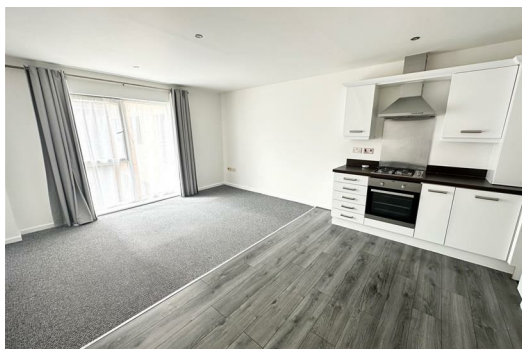
City Quay Ellerman Road, Liverpool, L3 4FG

£875 PCM

Berkeley Shaw are pleased to offer an apartment that ticks all the boxes - LUXURY - DELUXE are a few words to describe City Quay Development set in the heart of Liverpool. UNFURNISHED TWO Bedroom Second Floor Apartment complete with allocated parking, The property comprises of hallway, open plan lounge/kitchen with appliances, Two double bedrooms with an en suite bathroom, modern bathroom with gas central heating. This apartment has recently been refurbished.

Available Now call 01519246000 to secure a viewing.

Council Tax Band: B
Deposit: £875.00
Minimum Term: 12 monthss



Hallway

Entrance door, laminate flooring, Electric wall heater, walk in storage cupboard housing fuse board, stopcock and hanging area for coats

Open Plan Lounge Kitchen

Double Glazed window, electric wall heater, carpet in lounge area, laminate flooring to kitchen area, kitchen comprises of a range of fitted base and wall units, integrated oven and hob, extractor hood, plumbing for washing machine and plumbing for dishwasher, freestanding fridge freezer

Bedroom 1

Double Glazed window, carpet, electric wall heater, wardrobe

Ensuite Shower Room

Part tiled walls, walk in shower cubical with combination shower, large wall mirror, vanity sink and W.C unit, ladder towel rail

Bedroom 2

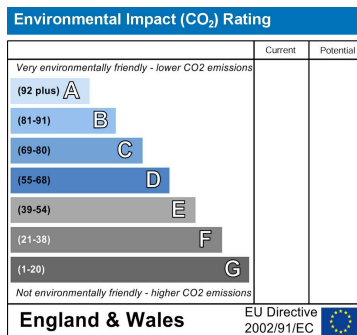
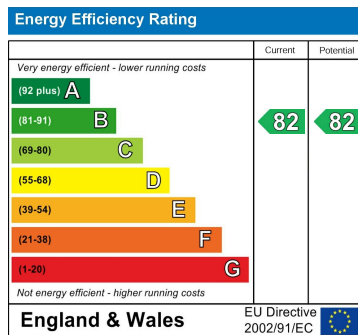
Double Glazed window, carpet, electric wall heater, wardrobe

Bathroom

Part Tiled, bath with shower over, low level e.c. part tiled walls ladder towel rail

Exterior

Communal Gardens and Lake, allocated parking space



Berkeley Shaw Estate Agents Limited.
Company No. 0784754

Berkeley Shaw Real Estate Limited.
Company No. 05206927

