



## Cinnamon Building, 50 Henry Street, Liverpool, Merseyside L1 5FE

### £1,100 PCM

Berkeley Shaw are please to Offer TO LET this spacious TWO bedroom furnished duplex PENTHOUSE apartment located in the popular Cinnamon building on Henry Street. This is a much sought after development that is close to the city centre, hospitals, universities, plus the attractions of Bold Street. This apartment comprises: hallway, bedroom with walk in cupboard and bathroom to the first floor, upstairs is the open plan lounge/dining area, fully fitted kitchen. Double bedroom and ensuite shower room.

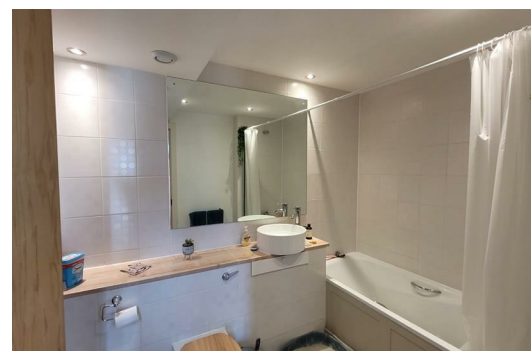
This property boasts uninterrupted views across the city sky line.

Available from 1st October 2023

Minimum Term: 12 months

Deposit: £1100.00

Council Tax Band: B



## Hallway

Entrance door, staircase to first floor, laminate flooring, under stairs storage

## Bathroom

Fully tiled walls and Floor, bathroom comprises of bath with shower over, low level w.c. and sink, walk in storage cupboard housing washing machine

## Bedroom 2

Double glazed windows, underfloor heating, walk in storage cupboard with rails, furniture includes double bed and mattress wardrobes

## First Floor

### Landing

Laminate flooring

### Lounge Kitchen

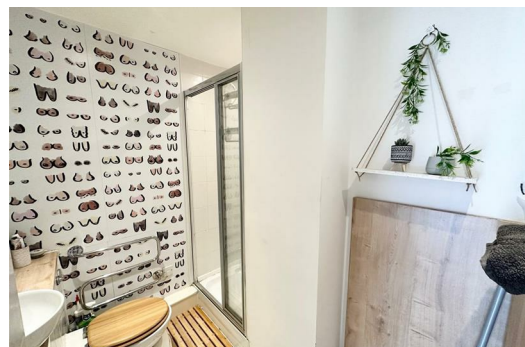
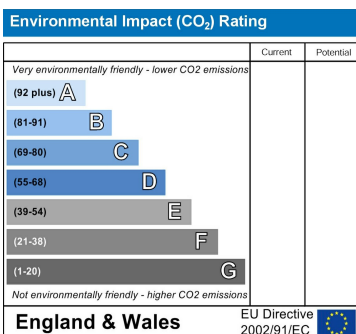
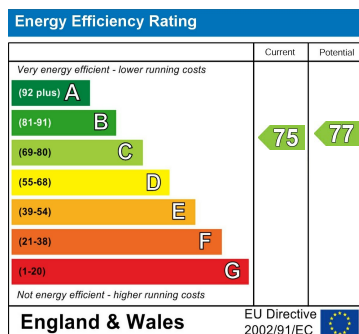
Double glazed windows, 2 x electric wall heaters, laminate flooring, kitchen area comprised of a range of fitted base and wall units with integrated fridge/ freezer, dishwasher, electric oven, electric hob, extractor hood, kitchen island with 2 stools, furnishings include L shaped sofa, dining table with benches, tv stand

## Bedroom 1

Double glazed windows, under floor heating, laminate flooring, furniture includes, Double bed and mattress, units

## Ensuite Shower Room

Tiled walls and flooring, under floor heating, low level w.c. and sink, walk in shower cubical with glas surround, combination shower



Berkeley Shaw Estate Agents Limited.  
Company No. 0784754

Berkeley Shaw Real Estate Limited.  
Company No. 05206927

