



Sky Gardens, 16 Crosby Road North, Liverpool, L22 0AD

£650 PCM

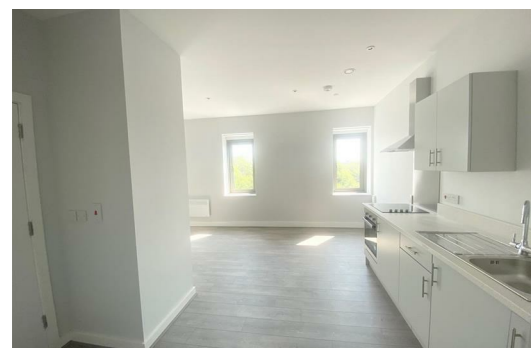
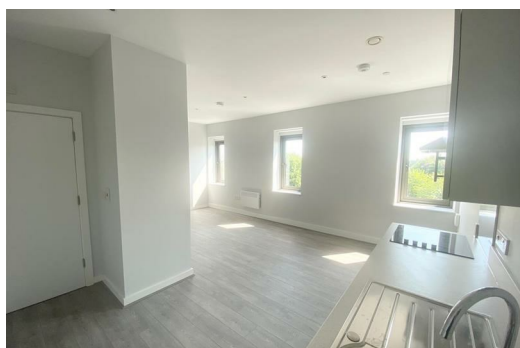
Sky Gardens is a stunning residential development set in the heart of one of Liverpool's most affluent suburbs. This STUDIO UNFURNISHED APARTMENT on THIRD FLOOR is Available in this development is within minutes of Crosby Beach, these beautifully-appointed apartments are designed for professionals working in the city, but looking for a relaxed coastal lifestyle. Crosby Beach is home to Sir Antony Gormley's iconic art installation, 'Another Place'.

Crosby was recently named by 'The Sunday Times' as one of the top 5 places to live in the North West and is popular with sports stars and celebrities. Crosby Gardens complete with concierge, integrated appliances, and optional on-site car parking (fees apply).

Council Tax; Unbanded as new build

Deposit: £650

Minimum Term: 12 months

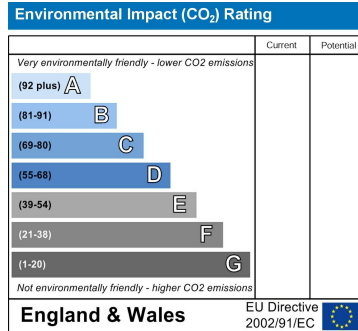
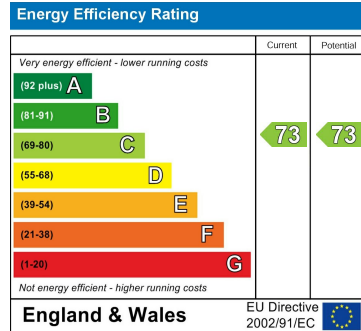


Lounge / Kitchen / Bedroom

Double glazed windows, electric wall heater, laminate flooring, kitchen comprises of a range of fitted base and wall units with single stainless steel sink unit with mixer tap, under counter fridge with icebox, washer dryer, cooker and hob, extractor hood.

Shower Room

Part tiled, large shower base, glass enclosure, sink, low level w.c. heated towel rail, double glazed window



Berkeley Shaw Estate Agents Limited.
Company No. 0784754

Berkeley Shaw Real Estate Limited.
Company No. 05206927

