



## 68 Barleyfield, Preston, PR5 8JJ

**£425 PCM**

A well maintained ground floor studio apartment in a quiet residential area near Clayton-Le-Woods, within a block of 8 studio apartments (4 on the ground floor and 4 on the first floor), close to both Preston City Centre and Chorley Town Centre. The studio flat is ideal for single occupation and is within walking distance to two supermarkets and close to major bus routes. With the benefit of UPVC double glazing and private car park.

Decorated neutral throughout the accommodation comprises: Living/bedroom area, separate modern fitted kitchen, shower room with white three piece suite and dressing area.

Deposit: £425

Holding Deposit: £100

Council tax band: A

EPC band: D

Minimum tenancy term is six months



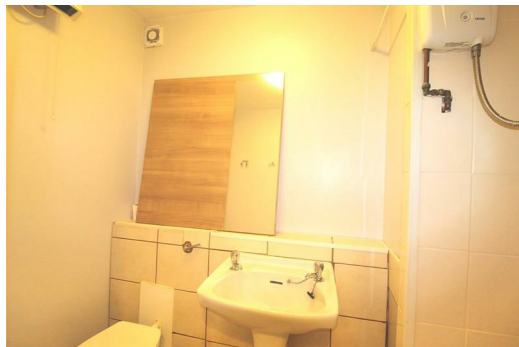
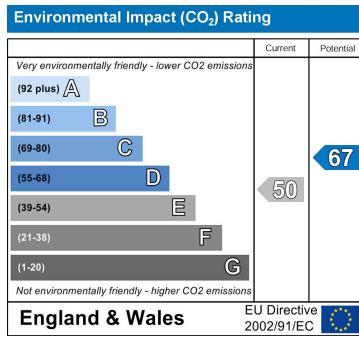
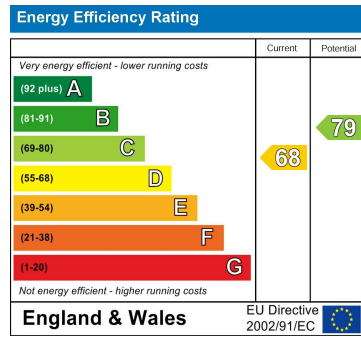
Lounge/bedroom

Kitchen

Shower Room

Dressing room

External



Berkeley Shaw Estate Agents Limited.  
Company No. 0784754

Berkeley Shaw Real Estate Limited.  
Company No. 05206927

