



41 Victoria Road, Liverpool, L13 8AL

£235,000

Attention investors & families Welcome to Victoria Road, Tuebrook, Liverpool - and this spacious five/six bedroom semi-detached house. The property boasts generous gardens with access from Osborne Road.

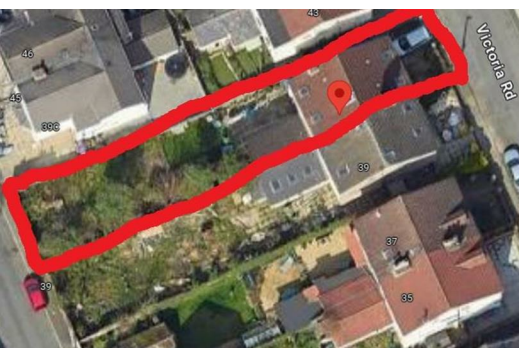
This property offers fantastic potential for further development, allowing you to tailor it to your preferences, subject to necessary planning permissions.

Situated in a desirable area with no onward chain, this home is a blank canvas ready for your personal touch. While it may require some modernisation, this presents a wonderful opportunity to create a space that truly reflects your style and needs.

Set out across three floors, the accommodation briefly comprises; entrance hall, spacious bay fronted family room, generous lounge with access to the spacious kitchen diner. The first floor boasts two spacious bedrooms, with the potential for adding an additional bedroom, the master bedroom has an en-suite shower room & a further family bathroom. The upper floor boasts three further double bedrooms.

The owners have submitted planning permission for a detached residence to be built in the back garden. If successful, the property will be sold with the addition of planning permission for the garden.

Get in touch straight away to arrange a viewing!



Entrance hall

Laminate floor, 2 x radiators, single glazed window, understairs storage & door to side elevation.

Family room

15'3" x 17'0" (4.66 x 5.19)

Single glazed windows to bay, radiator, open fire, ceiling rose & coving.

Lounge

19'5" x 12'5" (5.94 x 3.79)

Laminate floor, single glazed window, radiator & gas fire.

Kitchen diner

10'3" x 20'6" (3.13 x 6.25)

Range of wall & base units, 2 x single glazed windows, stainless steel sink with drainer, part tiled walls, radiator & door to garden.

First floor Landing

Bedroom 1

12'11" x 14'9" (3.96 x 4.52)

Laminate floor, single glazed windows, 2 x storage cupboards, fitted wardrobes, radiator & coving.

En-suite

5'1" x 8'1" (1.56 x 2.47)

WC, basin, bidet, shower, spotlights, tiled floor, tiled walls, single glazed window & towel radiator

Bedroom 2

17'3" x 13'5" (5.27 x 4.09)

Spacious bedroom, knocked through with lift access, 2 x single glazed windows, combi boiler, 4 x storage cupboards & 2 x radiators.

Bathroom

4'10" x 7'0" (1.48 x 2.14)

Single glazed window, WC, basin, bath with shower attachment, glass screen, tiled floor & tiled walls.

Second floor landing

Bedroom 3

19'8" x 15'0" (6 x 4.58)

2 x velux windows & 2 x radiator

Bedroom 4

9'8" x 13'3" (2.96 x 4.06)

Velux window & radiator.

Bedroom 5

9'6" x 13'4" (2.92 x 4.07)

Velux window & radiator.

Externally

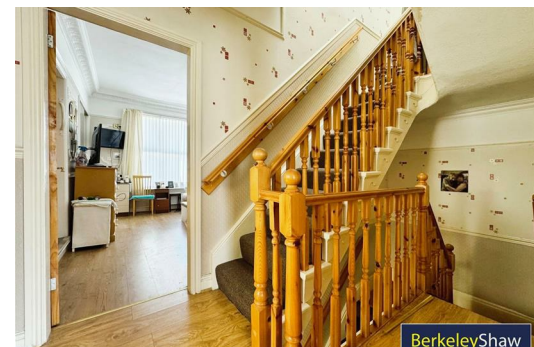
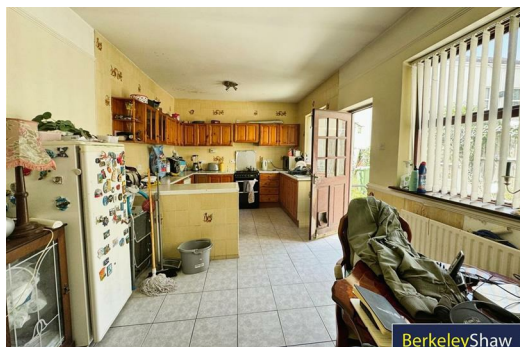
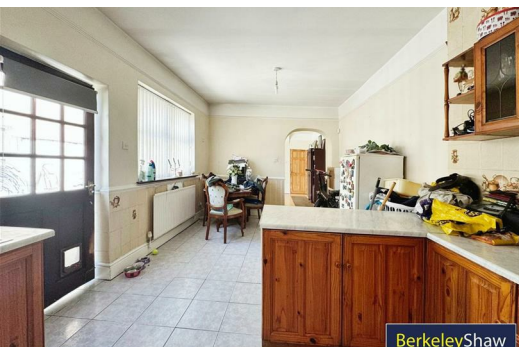
Driveway parking & front garden. Generous rear garden with access from Osborne Road.

Energy Efficiency Rating		Current	Potential
Very energy efficient - lower running costs			
(92 plus) A			
(81-91) B			
(69-80) C			
(55-68) D			
(39-54) E			
(21-38) F			
(1-20) G			
Not energy efficient - higher running costs			
England & Wales		EU Directive 2002/91/EC	

Environmental Impact (CO ₂) Rating		Current	Potential
Very environmentally friendly - lower CO ₂ emissions			
(92 plus) A			
(81-91) B			
(69-80) C			
(55-68) D			
(39-54) E			
(21-38) F			
(1-20) G			
Not environmentally friendly - higher CO ₂ emissions			
England & Wales		EU Directive 2002/91/EC	



Whilst every attempt has been made to ensure the accuracy of the floorplan contained herein, measurements of doors, windows, rooms and any other items are approximate and no responsibility is taken for any error, omission or mis-statement. This plan is for illustrative purposes only and should be used as such by any prospective purchaser. The contents, fixtures and appliances shown have not been tested and no guarantee, as to their quality or efficiency, can be given. Made with Metapic CO24



Berkeley Shaw Estate Agents Limited.
Company No. 0784754

Berkeley Shaw Real Estate Limited.
Company No. 05206927

