



Unity Building, 3 Rumford Place, Liverpool, Merseyside L3 9BW

£1,395 PCM

Berkeley Shaw are pleased to offer this high specification 3 bedroom, tenth floor duplex apartment.

The development is one of the most iconic buildings in the city with 24 hour concierge service and a residents gymnasium.

Apartment briefly comprises entrance hallway, open plan living room/ fitted kitchen with granite work surfaces, main bedroom with floor to ceiling windows and a partial river view, two further bedrooms, contemporary bathroom and shower room, double glazing, electric heating.

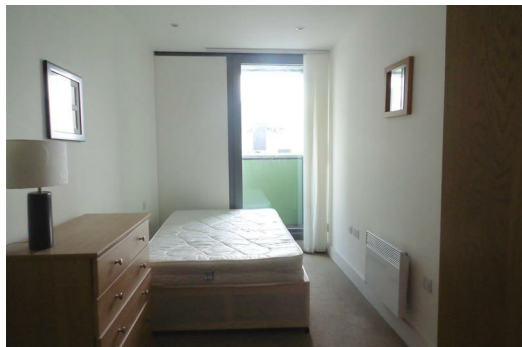
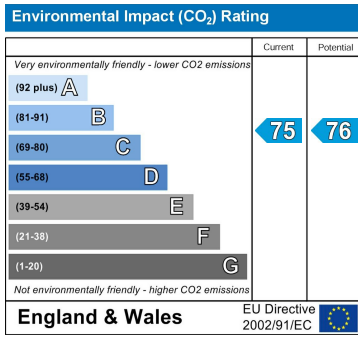
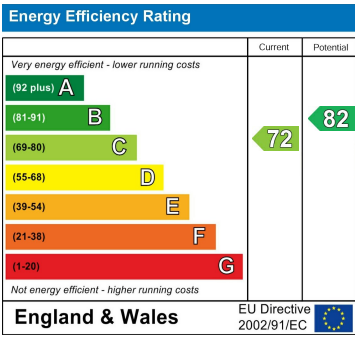
Please note there is no parking with this apartment.

Council Tax band: D

Deposit: £1,395

Rental Duration: minimum 6 months





Berkeley Shaw Estate Agents Limited.
Company No. 0784754

Berkeley Shaw Real Estate Limited.
Company No. 05206927

