



Park Lane Plaza, 2 Jamaica Street, Liverpool, L1 0AF

£1,100 PCM

Berkeley Shaw are pleased to offer TO LET this First Floor TWO BEDROOM FURNISHED apartment located within the Park Lane Plaza development. Apartment briefly comprises; hallway, open plan living and kitchen area with appliances included, private balcony, two double bedrooms, bathroom. Benefits include balcony, lifts to all floors and communal permit parking.

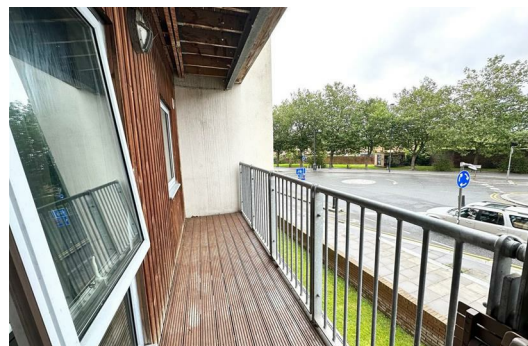
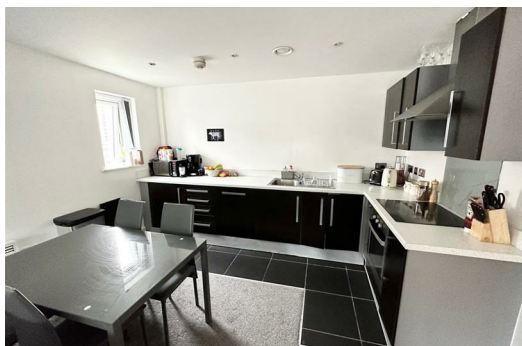
Available from November 2024.

Viewing Highly Recommended.

Deposit : £1100

Minimum Term: 12 Months

Council Tax: Band B



Hallway

Entrance door, Carpet, Electric heater, walk in storage room with water cylinder, 2 door wardrobe chest of drawers

Open Plan Lounge Kitchen

Double glazed windows, double glazed door to balcony, carpet, electric wall heaters, tiled floor in kitchen area, kitchen comprises of a range of fitted base and wall units integrated under counter fridge with icebox, oven, hob, extractor hood, washer dryer, dishwasher, furnishings include: 1 x 2 seater and 1 x 3 seater couch, coffee table, tv stand, dining table and chairs

Bedroom 1

Double glazed windows, carpet, electric wall heater, furnishings include 1 x King size bed and mattress, 2 x chest of drawers, 1 x 3 door wardrobe, 1 x bedside cabinet

Bedroom 2

Double glazed windows, carpet, electric wall heater, furnishings include 1 x Queen size bed and mattress,

Bathroom

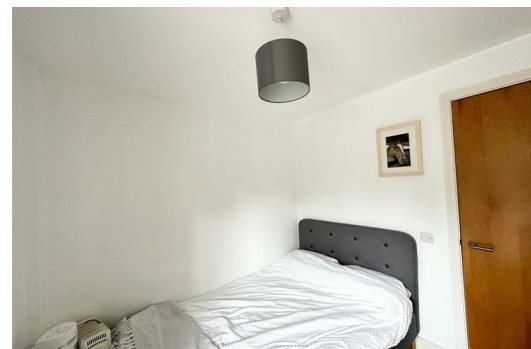
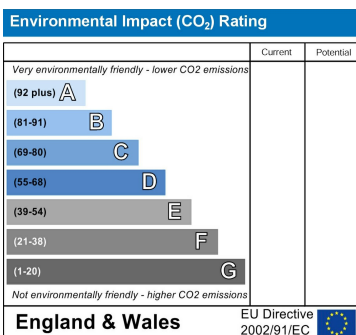
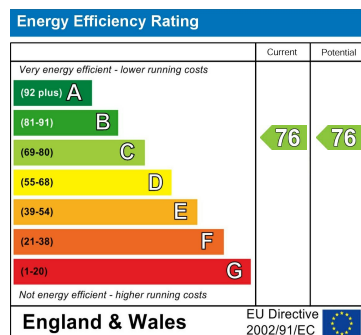
Part tiled walls and flooring, bath with shower over and screen, low level w.c. sink, ladder towel heater

Balcony

Located off the lounge,, wooden decked floor

Communal Permit parking

communal parking (permitted)



Berkeley Shaw Estate Agents Limited.
Company No. 0784754

Berkeley Shaw Real Estate Limited.
Company No. 05206927

